



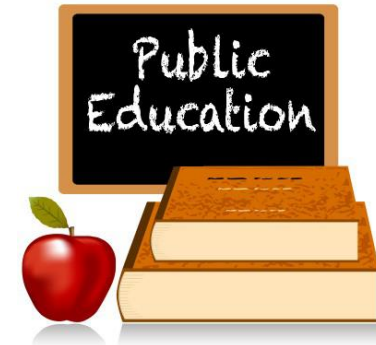
Monroe County Education Coalition Steering Committee
&
Democrat and Chronicle Editorial Board

January 23, 2018



Agenda:

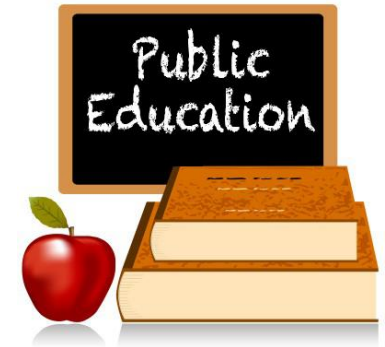
- ❖ Welcome and Introductions
- ❖ What is MCEC?
 - Function
 - Mission
 - Membership
- ❖ What would we like to share with you today?
 - Public Education as an economic driver
 - Areas of advocacy for MCEC this year
 - Current Challenges for Public Education



What is the Monroe County Education Coalition?

MCEC is a partnership of the major stakeholders in public education in Monroe County. Established in 1995, this group collaborates on common issues to:

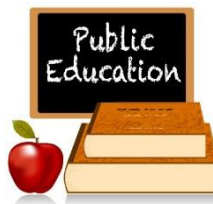
- Increase community awareness and support for our excellent local public schools;
- Increase community awareness of societal issues that impact children's ability to learn;
- Encourage coalitions and teamwork among members;
- Seek funding to support public education;
- Advocate on specific pieces of legislation that we agree do not benefit public school students.



Who Do We Represent and How Do We Work Together?

Monroe County Public Schools:

- Are the 2nd largest employer in the county with over 22,000 full time employees;
- Serve over 106,000 students; 95% of public school students attend our district schools;
- Are governed by locally elected officials, all volunteers with the exception of RCSD;
- Develop budgets that are transparent and have the only budgets that tax payers can directly vote on;
- Collaborate with each other and with towns, villages, the city of Rochester and the county to save money in the areas of health insurance, equipment, fuel, utilities and supplies;
- Return 88% of revenue generated back into the community to support local business.



Public Education in Monroe County as an Economic Driver

Academic programs that promote diversity, collaboration and College and Career Readiness *beyond academic requirements –all non mandated programs that could be cut*

- Urban-Suburban
- SUPA (Syracuse University Project Advance)
- Project Lead the Way
- 3-1-3 Program with The College at Brockport
- International Baccalaureate
- International Baccalaureate Middle years
- International Baccalaureate Primary years
- Dual Credit with Monroe Community College
- Foreign Exchange Program
- Dual Credit with RIT
- College credit through Genesee Community College
- Dual Credit with Finger Lakes Community College
- P-Tech Rochester Pathways to Technology Program
- College credit through the University of Rochester



Public Education in Monroe County as an Economic Driver

Opportunities that promote diversity, collaboration and College and Career Readiness
outside of the classroom – all non mandated programs that could be cut

- Junior Achievement
- Math League
- Master Minds
- Model United Nations
- Odyssey of the Mind
- FIRST Robotics
- FIRST Lego League
- Math Olympiad
- Science Olympiad
- Mock Trial
- Model Congress
- Student Race Summits
- Future Business Leaders of America (FBLA)
- Distributive Education Clubs of American (DECA)
- National Geography Olympiad
- Academic Challenge Bowl
- Chess League
- Young Entrepreneurs Academy (YEA!)
- JETS Engineering
- Unified Basketball
- Today's Students, Tomorrow's Teachers

Recent Honors, Awards and Recognitions for our public school districts

US Department of Education Recognition for Academic Excellence or “Closing the Gap” Achievement –Blue Ribbon Schools -

- Honeoye Falls-Lima HS, Honeoye Falls-Lima CSD.
- Leo Bernabi Elem., Spencerport CSD.
- Park Rd. Elem. And Barker Rd. MS, Pittsford CSD.
- French Rd. Elem., Brighton CSD.
- Iroquois MS, West Irondequoit CSD.
- Pine Brook Elem., Greece CSD.
- School 58-World of Inquiry, Rochester City SD.
- Florence Brasser Elem., Gates Chili CSD.

New York State Education Department Recognition for Academic Excellence –

- **Schools to Watch**– Middle school recognition –Brighton MS, Brighton CSD; Barker Rd. and Calkins Rd. MS, Pittsford CSD; Merton Williams MS, Hilton CSD; Martha Brown and Johanna Perrin MS, Fairport CSD; Ada Cosgrove MS, Spencerport CSD.
- **Reward Schools** –Brookside and Pine Brook Elementary Schools, Greece CSD.; Brighton HS; Churchville-Chili HS; Fairport HS; Honeoye Falls-Lima HS; Penfield HS; Pittsford Sutherland HS and Pittsford Mendon HS; Rush-Henrietta HS; Webster Schroeder HS and Webster Thomas HS.

Recent Honors, Awards and Recognitions for our public school districts

Other National Recognitions –

- Gold Medal High Schools (US News and World Report)
 - Pittsford Mendon HS and Pittsford Sutherland
 - Brighton HS
 - Honeoye Falls-Lima HS
 - Webster HS
- Silver Medal High Schools (US News and World Report)
 - Penfield HS
 - Fairport HS
 - Rush-Henrietta HS
 - East Rochester HS
- Most Challenging Schools (Washington Post)
 - Pittsford Sutherland HS and Pittsford Mendon HS
 - Brighton HS
 - Webster Thomas HS
 - Honeoye Falls-Lima HS

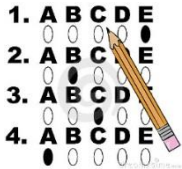
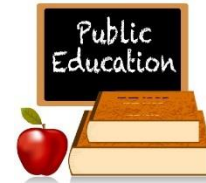
Music Recognitions – National Association of Music Merchants (NAMM) award for the top 100 communities for music education – Brighton CSD; Churchville-Chili CSD; East Irondequoit CSD; Greece CSD; Honeoye-Falls Lima CSD; Penfield CSD; Pittsford CSD; Rush-Henrietta CSD; Webster CSD; West Irondequoit CSD.

MCEC is working together on these challenges for public education



Funding-

- Advocating for full funding of Foundation Aid.
- Advocating to unfreeze aid for full day kindergarten (currently full day kindergarten students are aided as half day students for schools who adopted full day K after 2008).
- Opposing a 2% cap on expense based aids for 2019-2020.
- Opposing the 60% super majority vote for overriding the tax levy cap.



APPR-

- Advocating for removing from state law the current Annual Professional Performance Review regulations; one of these most expensive mandates required of school districts.

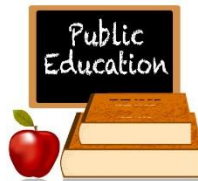


Mandate relief-

- Advocating for full funding of any new mandates, funding for unfunded and underfunded mandates and to allow Board members to have the local control to provide for efficient and effective management over their programs and budgets.

Other Challenges for Public Education in Monroe County

- ✓ Economically disadvantaged in 19 suburban districts (includes Holley and Kendall) = 32%;
- ✓ Economically disadvantaged in RCSD = 91%;
- ✓ Homelessness affects every school district as they work to try to find and place homeless students;
- ✓ English Language Learners requirements have substantially increased as have students who require supports for a multitude of languages for which there are few interpreters;
- ✓ Special Education costs continue to increase as schools work to provide the appropriate instruction and supports;
- ✓ School districts have seen an influx of students from places like Puerto Rico and schools are working to provide needed placement and supports;
- ✓ The Opioid crisis has affected families in every school district and schools are working to provide ways to help families and their communities to help in resolving this.
- ✓ Mental health needs have increased across all of our school districts and require supports like suicide prevention efforts.





THANK YOU!

